

# SHARP



## Operation manual

UA-PN1U

Air Purifier

EN

# CONTENTS

<b>IMPORTANT SAFETY INSTRUCTIONS.....</b>	<b>1</b>
<b>PART NAMES .....</b>	<b>4</b>
<b>BEFORE FIRST USE.....</b>	<b>6</b>
<b>CARE AND MAINTENANCE .....</b>	<b>7</b>
<b>FILTER REPLACEMENT .....</b>	<b>8</b>
<b>TROUBLESHOOTING .....</b>	<b>9</b>
<b>SPECIFICATIONS.....</b>	<b>10</b>

## Plasmacluster

Plasmacluster treats the air similar to the way nature cleans the environment by emitting a balance of positive and negative ions.



HIGH-DENSITY 7000\*

"Plasmacluster" and "Device of a cluster of grapes" are trademarks of Sharp Corporation.

\* The number in this technology mark indicates an approximate number of ions supplied into air of 1 cm<sup>3</sup>, which is measured around the centre of a room applicable floor area (at 1.2 m height above the floor) when the product is placed on the floor and is operating with MAX mode.

Thank you for purchasing this SHARP Air Purifier. Please read this manual carefully before using the product. This manual should be kept in a safe place for handy reference.

## WARRANTY

Dear Customer, Thank you for having purchased this SHARP product. We would like to inform you that your warranty rights are in the European warranty card.

You can download them from

**[www.sharpconsumer.eu](http://www.sharpconsumer.eu)**

or contact your retailer where you purchased your device. You can also obtain the copy of the warranty rights via the electronic or conventional mail after submitting your request to

**[service.gb@sharpconsumer.eu](mailto:service.gb@sharpconsumer.eu)** (UK)

**[service.ie@sharpconsumer.eu](mailto:service.ie@sharpconsumer.eu)** (IE)

or calling the number

**+44 (0) 330 024 0803 (UK)**

**+353 1443 3323 (IE).**

Calls are charged at your normal telephone call rate.

**Keep proof of purchase because it is necessary to apply warranty rights.**

## Please read before operating your new Air Purifier

The air purifier draws in room air through the Air Inlet, circulates it through a Pre-Filter, a Dust Collection and Deodorizing Integrated Filter inside the product, and then discharges it through the Air Outlet. The Dust Collection and Deodorizing Integrated Filter can remove dust particles and absorb odours as they pass through the filter.

Some odours absorbed by the filters will break down over time, causing additional odours. Depending on usage conditions, and especially if the product is used in environments significantly more severe than a normal household, these odours may become noticeable sooner than expected. If these odours persist, replace the filters.

### NOTE

- The air purifier is designed to remove air-suspended dust and the odours. The air purifier is not designed to remove harmful gases such as carbon monoxide contained in cigarette smoke. The air purifier may not completely remove an odour if the source of the odour is still present.

# IMPORTANT SAFETY INSTRUCTIONS

---

Always follow basic safety precautions when using electrical appliances, including the following:

**WARNING** – Always observe the following to reduce the risk of electrical shock, fire, or injury:

- Read all instructions before using the product.
- Use only a 220 - 240 volt outlet.
- Use only the AC adapter of the product.
- **This appliance can be used by children aged from 8 years and above and persons with reduced physical, sensory or mental capabilities or lack of experience and knowledge if they have been given supervision or instruction concerning use of the appliance in a safe way and understand the hazards involved. Children shall not play with the appliance. Cleaning and user maintenance shall not be made by children without supervision.**
- **If the power cord is damaged, it must be replaced by the manufacturer, its service agent, a Sharp authorized Service Centre or similarly qualified persons in order to avoid a hazard. Contact the nearest Service Centre for any problems, adjustments, or repairs.**
- **Do not repair or disassemble the product yourself.**
- **Be sure to remove the AC adapter before performing maintenance, when removing and attaching and replacing the filter and when not using for a long time. Failure to do so can cause a short circuit resulting in electrical shock or fire.**
- Do not use the product if the power cord or AC adapter is damaged or if the connection to the wall outlet is loose.
- Periodically remove dust from the AC adapter.
- Do not insert fingers or foreign objects into the Air Inlet or Air Outlet.
- When removing the AC adapter, always hold the AC adapter and never pull on the cord. Failure to do so can cause a short circuit resulting in electrical shock or fire.

- Be careful not to damage the power cord. Failure to do so can cause electric shock, heat generation, or fire.
- Do not remove the AC adapter when your hands are wet.
- Do not use this product near gas appliances or fireplaces. When the product is operated with gas appliances in same room, Ventilate a room periodically, otherwise it may cause Carbon monoxide poisoning.
- Do not operate the product in rooms where aerosol insecticides are present. Do not operate the product in rooms where there is oily residue, incense, sparks from lit cigarettes, or chemical fumes in the air.
- Keep the product away from water. Do not operate the product in places where it may get wet, such as a bathroom.
- Do not expose the product to water. Doing so can cause a short circuit or electrical shock.
- Be cautious when cleaning the product. Strong corrosive cleansers can damage the exterior.

**NOTE** – What to do if the product interferes with radio or TV reception

If the air purifier interferes with radio or television reception, try one or more of the following measures:

- Adjust or reposition the receiving antenna.
- Increase the distance between the product and the radio or TV.
- Connect the equipment into an outlet on a circuit different from that of the radio or TV receiver.
- Consult the dealer or a qualified radio or TV technician.

## **CAUTIONS CONCERNING OPERATION**

- Do not block the Air Inlet or Air Outlet.
- Do not place the product near or on hot objects, such as stoves or heaters, or where it may come into contact with steam.
- Always operate the product in an upright position.
- Do not move the product when it is in operation.
- If the product is on easily damaged flooring, an uneven surface, or thick-piled carpet, lift it up when moving.
- Do not operate the product without the filters properly installed.

- Do not wash and reuse the Dust Collection and Deodorizing Integrated Filter. Doing so will not improve filter performance and can also cause electric shock or operating malfunctions.
- Clean the exterior with a soft cloth only. Do not use volatile fluids or detergents. The product surface may be damaged or cracked with Benzine paint thinner, alcohol or polishing powder.
- Do not scrub the Pre-Filter hard during its maintenance.
- Do not use the AC adapter for other products.
- Do not get or lean on the product.

## **INSTALLATION GUIDELINES**

- Avoid locations where furniture, fabrics, or other objects can come in contact with the product and interfere with the Air Inlet and Air Outlet.
- Avoid locations where the product is exposed to condensation or drastic changes in temperature. Appropriate room temperature is between 0 – 35 °C.
- Place the product on a level and stable surface with sufficient air circulation. Place the product in the centre of the room for better air circulation. When placed on heavy carpet, the product may vibrate slightly.
- Avoid locations with grease, oil smoke, alcohol, hypochlorous acid, or chemicals in the air. Doing so can cause the product exterior to crack.
- The surrounding walls and floor of the product may become dirty over time. When using the product for an extended period of time at the same location, periodically clean the walls and floor adjacent to it.
- Do not use fluororesin or silicone-containing products (cosmetics, hair care products, etc.,) near the product. The fluororesin or silicone could get stuck inside the product, preventing it from producing Plasmacluster ions.

## **FILTER GUIDELINES**

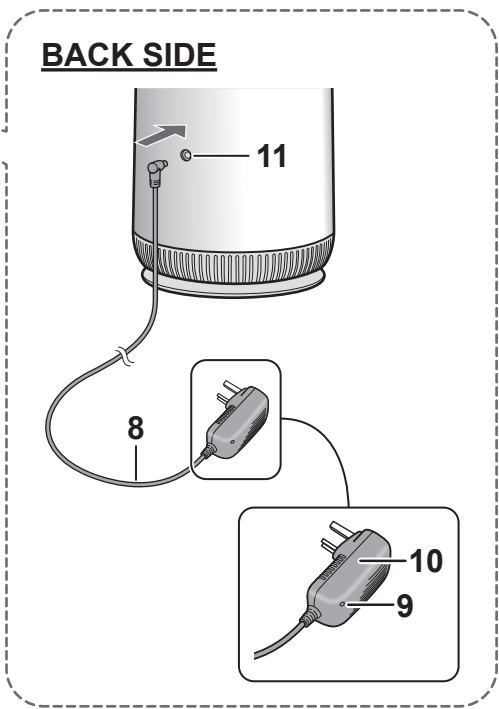
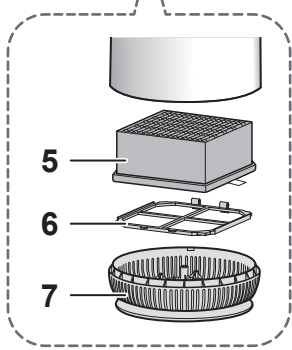
- Follow the instructions in this manual for proper filter care and maintenance.

# PART NAMES



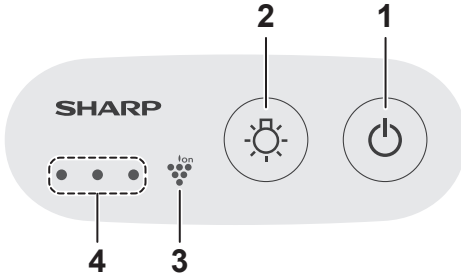
**NOTE**

- When using for the first time, please remove the plastic bag from the Dust Collection and Deodorizing Integrated Filter. (Page 6)



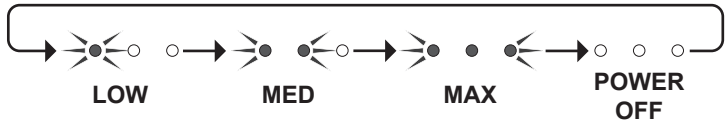
1	Operation Panel	8	Power cord
2	Night Light	9	<b>Power Lamp (Blue)</b> • The lamp lights up while the AC adapter is connected to the outlet.
3	Air Outlet		
4	Air Inlet		
5	Dust Collection and Deodorizing Integrated Filter	10	<b>AC Adapter</b> • Shape of adapter depends on country.
6	Pre-Filter		
7	Bottom Cover	11	<b>AC Adapter Terminal</b>

## OPERATION PANEL



1	Power ON/OFF and Mode Button
2	Night Light Button
3	Plasmacluster Ion Lamp (Blue)
4	Mode Lamps (White)

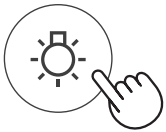
## POWER ON/OFF AND SETTING MODE



### NOTE

- In LOW mode, the lamps on the Operation Panel lights up dimly.

## NIGHT LIGHT ON/OFF

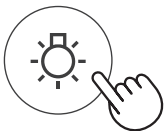


ON



The rear lights up.

## PLASMACLUSTER ION ON/OFF



Press for 3 sec.



### NOTE

- Plasmacluster ion will become always ON when after disconnecting and connecting the AC adapter again.

# BEFORE FIRST USE

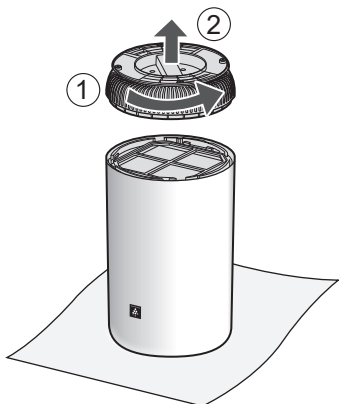
Always be sure to remove the AC Adapter from the wall outlet.



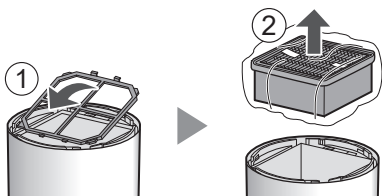
- 1** Turn the product upside down.



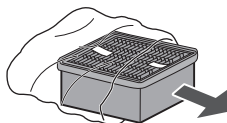
- 2** Remove the Bottom Cover.



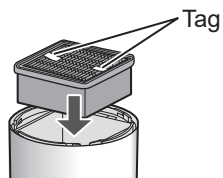
- 3** Remove the Pre-Filter ( ① ) and the Dust Collection and Deodorizing Integrated Filter ( ② ).



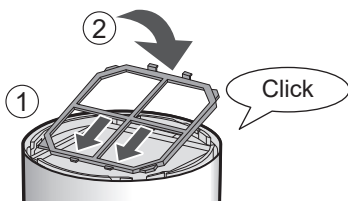
- 4** Remove the Plastic Bag.



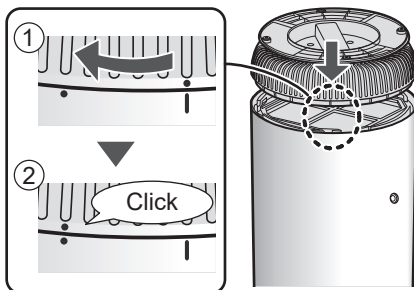
- 5** Attach the Dust Collection and Deodorizing Integrated Filter.



- 6** Attach the Pre-Filter.



- 7** Attach the Bottom Cover.





# CARE AND MAINTENANCE

Always be sure to remove the AC Adapter from the wall outlet.



## MAIN BODY

When it gets dirty



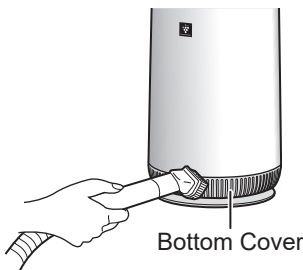
Wipe with a dry, soft cloth.

## AIR INLET / PRE-FILTER

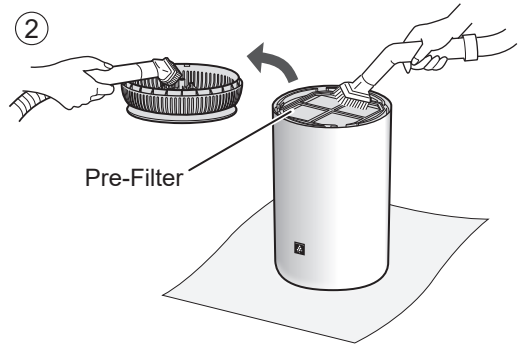
Once a month

Remove the dust gently with a cleaning tool such as a vacuum cleaner.

①

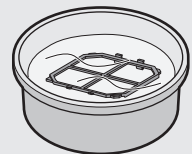


②



### NOTE About Pre-Filter

- Do not apply excessive pressure when scrubbing the Pre-Filter.
- How to clean hard to remove dirt.
  1. Add a small amount of kitchen detergent to water and soak for about 10 minutes.
  2. Rinse off the kitchen detergent with clean water.
  3. Completely dry the filter in a well ventilated area.

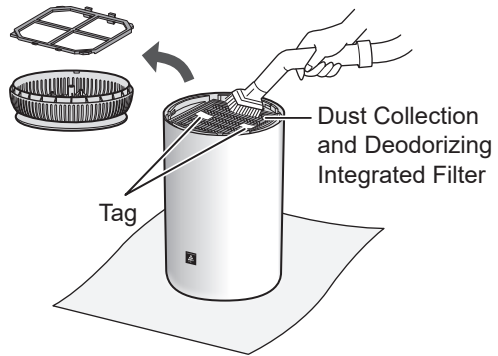


# Dust Collection and Deodorizing Integrated Filter

Whenever dust accumulates, or when odour emanates from the air outlet.

## Remove the dust on the filter.

Clean only the tagged surface. Do not clean up the opposite surface. The filter is fragile, so be careful not to give too much pressure.

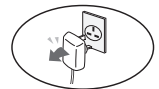


### NOTE

- Do not wash the filter. Do not expose to sunlight. (Otherwise these filter may lose efficacy.)
- Some odours absorbed by the filter will break down over time, causing additional odours. Depending on usage conditions, and especially if the product is used in environments significantly more severe than a normal household, these odours may become noticeable sooner than expected. Replace the filter in those cases or if dust is unable to be removed after maintenance.

## FILTER REPLACEMENT

Always be sure to remove the AC Adapter from the wall outlet.



### LIFE OF FILTER

Filter life varies depending on the room environment, usage conditions, and location of the product.

Lifespan of the Dust Collection and Deodorizing Integrated Filter and replacement suggestions are based on purifying a room in which 5 cigarettes are smoked per day and the product's dust collection and deodorizing performance has declined to half the level of a new filter.

We recommend replacing the filter more frequently if the product is used in conditions significantly more severe (PM2.5 etc.) than a normal household.

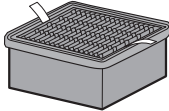
- **The life of the Dust Collection and Deodorizing Integrated Filter is about 1 year after opening.**

## **REPLACEMENT FILTER MODEL**

Consult your dealer when purchasing a replacement filter.

### **Dust Collection and Deodorizing Integrated Filter (1 unit)**

#### **UZ-PN1SF**



Dispose of used filters according to local laws and regulations.

material:

- Polypropylene
- Polyethylene
- Activated carbon

## **TROUBLESHOOTING**

Before calling for service, please review the Troubleshooting list below, since the problem may not be the product malfunction.

### **It doesn't operate.**

- Check if the AC adapter is correctly connected to the product and the outlet. (It may take some time until the operation starts when after connecting the AC adapter.)

### **Odour and smoke persists.**

- Is the filter still in the plastic bag? Take out the filter.
- Has the wind from the Air Outlet been weakened?  
In that case, clean the Bottom Cover, the Pre-Filter and the Dust Collection and Deodorizing Integrated Filter.

### **Air discharged from the product has an odour.**

- Check to see if the filters are extremely dirty.
- Clean or replace the filters.

### **Smell from a new product and/or filter.**

- Immediately after removing the plastic bag, a slight odour may occur. This odour is not harmful for filter performance or human exposure.

### **The Plasmacluster Ion Lamp is turned off.**

- When the Plasmacluster Ion is set to "OFF", the Lamp automatically turns off. If you do not want the light to be off, set the Plasmacluster Ion to "ON" setting. (Page 5)

### **The LOW mode Lamp is flashing.**

- Unplug the product, wait one minute, and then plug the product in again. If the flashing repeats periodically, please contact the customer service.

# SPECIFICATIONS

Model	UA-PN1U		
Power supply	AC adapter		
Rated input	AC 100 - 240 V ~ 50 - 60 Hz 1 A		
Rated outlet	DC 24 V 1.5 A		
Fan Speed Adjustment	MAX	MED	LOW
Fan Speed (m <sup>3</sup> / hour)	90	48	18
Rated Power (W) (Value when the Night Light is off.)	20 (20)	8.6 (8.1)	3.0 (2.5)
Noise Level (dBA) *1	48	34	22
Standby power (W)	Approx. 0.6		
Recommended Room Size (m <sup>2</sup> ) *2	~ 10		
High density Plasmacluster ion recommended room size (m <sup>2</sup> ) *3	~ 10		
Filter Type	Dust Collection and Deodorizing Integrated		
Cord Length (m)	Approx. 1.8		
Dimensions (mm)	190 (Φ) × 330 (H)		
Weight (kg)	Approx. 2.0		

\*1 • Noise level is measured based on the JEM1467 standard of the Japan Electrical Manufacturers' Association.

\*2 • The recommended room size is appropriate for operating the product of maximum fan speed.  
• The recommended room size is an area in which a given amount of dust particles can be removed in 30 minutes (according to JEM1467).

\*3 • Room size in which approximately 7000 ions per cubic centimetre can be measured in the centre of the room, at a height of approximately 1.2 metres from the floor, when the product is placed on the floor and is running at MAX mode.

## Standby Power

When the product's AC adapter is inserted in a wall outlet it consumes standby power in order to operate electrical circuits.

To conserve energy, unplug the AC adapter when the product is not in use.



Attention: Your product is marked with this symbol. It means that used electrical and electronic products should not be mixed with general household waste. There is a separate collection system for these products.

## **A. Information on Disposal for Users (private households)**

### **1. In the European Union**

IF YOU WISH TO DISPOSE OF THIS EQUIPMENT, DO NOT USE THE ORDINARY WASTE BIN, AND DO NOT PUT THEM INTO A FIREPLACE!

Used electrical and electronic equipment should always be collected and treated SEPARATELY in accordance with local law.

Separate collection promotes an environment-friendly treatment, recycling of materials, and minimizing final disposal of waste. IMPROPER DISPOSAL can be harmful to human health and the environment due to certain substances!

Take USED EQUIPMENT to a local, usually municipal, collection facility, where available.

If in doubt about disposal, contact your local authorities or dealer and ask for the correct method of disposal.

ONLY FOR USERS IN THE EUROPEAN UNION, AND SOME OTHER COUNTRIES; FOR INSTANCE NORWAY AND SWITZERLAND: Your participation in separate collection is requested by law.

The symbol shown above appears on electrical and electronic equipment (or the packaging) to remind the users of this.

Users from PRIVATE HOUSEHOLDS are requested to use existing return facilities for used equipment. Return is free of charge.

If the equipment has been used for BUSINESS PURPOSES, please contact your SHARP dealer who will inform you about take-back. You might be charged for the costs arising from take-back. Small equipment (and small quantities) might be taken back by your local collection facility. For Spain: Please contact the established collection system or your local authority for take-back of your used products.

### **2. In other Countries outside the EU**

If you wish to discard this product, please contact your local authorities and ask for the correct method of disposal.

For Switzerland: Used electrical or electronic equipment can be returned free of charge to the dealer, even if you don't purchase a new product. Further collection facilities are listed on the homepage of [www.swico.ch](http://www.swico.ch) or [www.sens.ch](http://www.sens.ch).

## **B. Information on Disposal for Business Users.**

### **1. In the European Union**

If the product is used for business purposes and you want to discard it:

Please contact your SHARP dealer who will inform you about the take-back of the product. You might be charged for the costs arising from take-back and recycling. Small products (and small amounts) might be taken back by your local collection facilities.

For Spain: Please contact the established collection system or your local authority for take-back of your used products.

### **2. In other Countries outside the EU**

If you wish to discard of this product, please contact your local authorities and ask for the correct method of disposal.

# MEMO

---

# MEMO

---



SDA/MAN/0141



TINSEA009KKRZ 21F - ①

Sharp Consumer Electronics Poland sp. z o.o.  
Ostaszewo 57B, 87-148 Łysomice, Poland

SHARP CORPORATION  
OSAKA, JAPAN

SDA/MAN/0141

[www.sharpconsumer.eu](http://www.sharpconsumer.eu)

**SHARP**