



## Technical Specification

	40BN2KA 40BN3KA 40BN4KA 40BN5KA 40BN6KA	43BN2KA 43BN3KA 43BN4KA 43BN5KA 43BN6KA
Energy Efficiency Class (SDR)	G	
Power consumption (SDR)	58 W	65 W
Energy Efficiency Class (HDR)	G	
Power consumption (HDR)	95 W	103 W
Screen resolution (pixels)	3840 x 2160	
Screen Size (diagonal)	101 cm / 40 inches	108 cm / 43 inches
RF	75 ohm Antenna • Analog • DVB • Satellite	
Inputs	3 x HDMI • 3 x USB • 1 x SD card reader • 1 x RJ45 LAN/Ethernet 1 x Composite/CVBS Video & Component/YPbPr input • 1 x L/R Audio input for Composite/CVBS & Component/YPbPr	
Sound Outputs	1 x Digital Optical Audio output • 1 x 3.5mm Headphone	
Speaker*/ Amplifier Watts (RMS)	2 x 10 / 2 x 8	
Voltage and power consumption	AC 220V ~ 240V; 50Hz 58/90/110W (home mode/standard/max) (<0.5W in Standby)	AC 220V ~ 240V; 50Hz 65/95/115W (home mode/standard/max) (<0.5W in Standby)
Dimensions including stand (mm)	914W x 580H x 194D	968W x 610H x 194D
Net weight (Kgs)	6.8	7.4
Wall Mounting	VESA 200 X 200 (mm)	

\*Built-in Harman Kardon speaker systems (Full-range speaker and tweeter).

SOUND SYSTEM BY  
**harman/kardon**

Harman Kardon is trademark of  
HARMAN International Industries,  
Incorporated, registered in the  
United States and/or other countries.

**HDMI**

The terms HDMI, HDMI High-Definition  
Multimedia Interface, and the HDMI  
Logo are trademarks or registered  
trademarks of HDMI Licensing  
Administrator, Inc.

**androidtv**

Google, Google Play,  
YouTube, Android TV and  
other marks are trademarks  
of Google LLC.

**Dolby Audio**

Manufactured under license  
from Dolby Laboratories. Dolby,  
Dolby Audio, and the double-D symbol  
are trademarks of Dolby Laboratories  
Licensing Corporation.

# SHARP

## androidtv

## Quick Start Set Up Guide

For information on using the TV's features, please refer to the Operating Instructions. (Available online to download.)

### Model Numbers

40BN2KA 43BN2KA  
40BN3KA 43BN3KA  
40BN4KA 43BN4KA  
40BN5KA 43BN5KA  
40BN6KA 43BN6KA

Register your manufacturers guarantee online within 14 days of purchase

at [www.registertoday.co.uk/sharp](http://www.registertoday.co.uk/sharp) and enter into a prize draw to...



### Quick & easy guide for setting up your TV

What is included in the box

Using the remote control

Setting up the TV for the first time - including attaching the stand

Connecting other devices to the Television

### Need help setting up or using your TV?

Please contact the UK & ROI Helpline\*

Telephone UK 0330 024 0803 or ROI 01443 3323

Online support at: [www.umc-uk.co.uk](http://www.umc-uk.co.uk)

Email support at: [service@umc-uk.co.uk](mailto:service@umc-uk.co.uk)

\*Calls to 0330 numbers are charged at standard call rates and are included as part of any bundled minutes with your phone provider. Hours are correct at time of this document being published.  
Please note these hours are subject to change periodically.  
Calls to the ROI number are charged at the local call rate.

The telephone opening hours are:

Monday to Friday: 8.30am – 6pm

Saturday: 9am – 5pm

Bank Holidays: 10am – 4pm

Closed Christmas and New Years day.



Please save your box/packaging as you will need this in the event of warranty/service repair or support. We are unable to carry out warranty/service if you are unable to package it correctly. The safest way to package your item in the event of warranty/service repair is in it's original box/packaging.



If you wish to use your Sky remote to operate the TV's basic functions, you will need a Sky remote control (Revision 9 or later) and you will need to program it with the code 2134. If you wish to use your Sky Q remote to operate the TV's basic functions, you will need to program it with the code 4170.

### Sky Remote Code

Note that to use the full functionality of Freeview Play your set must be connected to the internet.

Freeview Play brings together live TV viewing with "catch up" TV services such as BBC iPlayer, ITV player, More4 programmes, such as sport, comedy, dramas and soaps, etc. Content is made up from recommendations of the major broadcasters and offers an alternative means of searching.

This product contains technology subject to certain intellectual property rights of Microsoft. Use or distribution of this technology outside of this product is prohibited without the appropriate license(s) from Microsoft. Content owners use Microsoft PlayReady™ content access technology to protect their intellectual property, including copyrighted content. This device uses PlayReady technology to access PlayReady-protected content and/or WMDRM-protected content. If the device fails to properly enforce restrictions on content usage, content owners may require Microsoft to revoke the device's ability to consume PlayReady-protected content. Revocation should not affect unprotected content or content protected by other content access technologies. Content owners may require you to upgrade PlayReady to access their content. If you decline an upgrade, you will not be able to access content that requires the upgrade.



RF Cable

If you don't have the RF cable shown below, then you can purchase one from [www.umc-uk.co.uk/cables](http://www.umc-uk.co.uk/cables). If you are intending to connect your TV to an RF socket in order to receive Freeview you will need this cable.

### Additional Accessories

1 x Quick Start Guide  
1 x Remote Control and 2 x AAA Batteries  
1 x Safety Leaflet  
1 x Stand installation pack

Included with this TV are the following accessories

Accessories

## What is included in the box

To launch the online manual, press the HOME button, select Apps from the Home menu, and select "E-Instruction Manual" from the apps list.

## Online Manual

## Using the remote control



- 1** **STANDBY** - Switch on the TV when in standby or vice versa. By long pressing of this button, the set will display a menu offering power down option to energy saving standby mode.
- 2** **SOURCE** - To display the input/source menu.
- 3** **NUMBER BUTTONS** - 0-9 to select a TV channel directly.  
**MUTE** - Mute the sound or vice versa.  
**GUIDE** - Opens the 7 day TV guide (digital TV mode).
- 4** **VOL (+/-)** - To increase/decrease the sound level.  
**The Google Assistant** - Use your voice to access entertainment, control smart devices, obtain answers on screen, and more.  
**HOME** - Display the TV Home Menu.  
**CH (+/-)** - To increase or decrease the channel being watched.  
**MENU** - Display LIVE TV menu. This button works only in sources (TV, HDMI, component, etc.). It will not work in the Home Menu.  
**INFO** - Press once for now/next channel information.  
**BACK** - To go back a previous step.  
**EXIT** - To exit all menus.
- 4** **NETFLIX** - Access the Netflix App.  
**Prime video** - Access the Prime video App.  
**YouTube** - Access the YouTube App.  
**Freeview Play** - Access the Freeview Play app. service.  
**MTS** - Opens audio track menu.  
**TEXT** - To enter/exit teletext.  
**SUB** - To switch the dialogue at the bottom of the screen (on/off).  
**TV** - To switch to Live TV.
- 4** **COLOUR BUTTONS** - Execute corresponding function at that time:  
**MI** - To play/pause media  
**MI** - To play in fast forward mode  
**MI** - To stop the playback

# Setting up the TV set for the first time

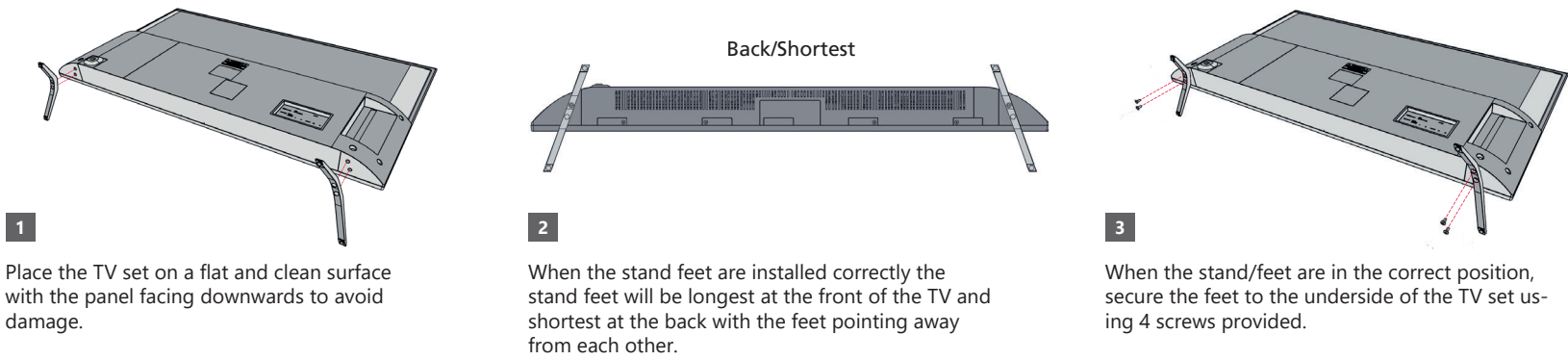
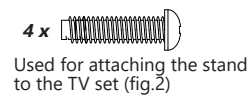
To obtain a copy of your Operating Instructions, please go to: [https://www.umc-uk.co.uk/instruction-manuals/Sharp-TV\\_information.html](https://www.umc-uk.co.uk/instruction-manuals/Sharp-TV_information.html)

## 1 Fitting the stand

The TV panel must be facing downwards.

For the stand installation, there is one type of screw provided as shown below.

**Note:** To complete the stand installation you will require a cross head screw driver.

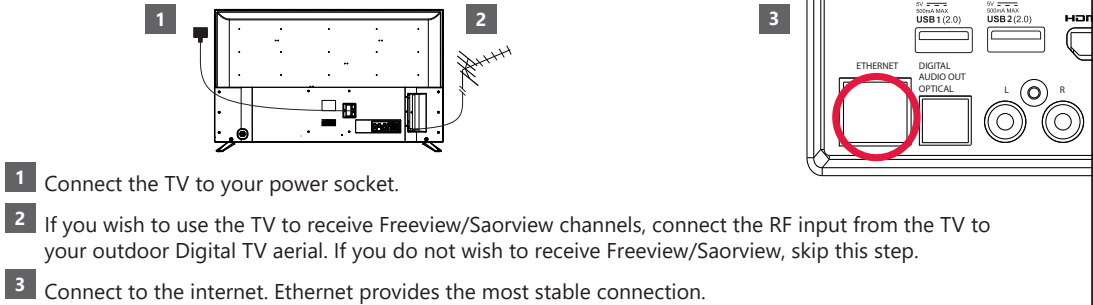


Place the TV set on a flat and clean surface with the panel facing downwards to avoid damage.

When the stand feet are installed correctly the stand feet will be longest at the front of the TV and shortest at the back with the feet pointing away from each other.

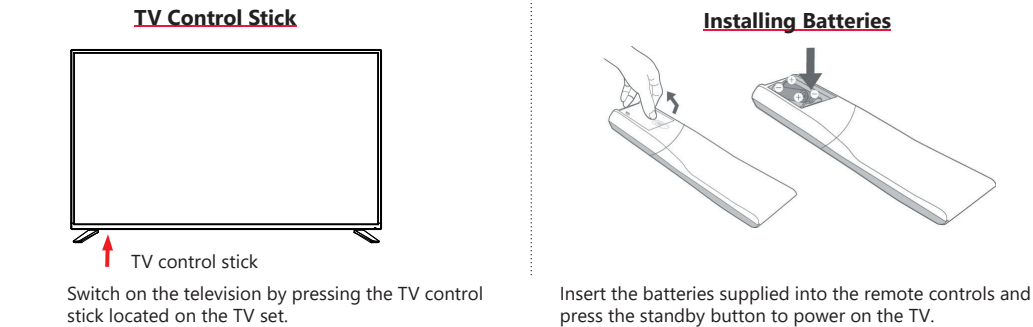
When the stand/feet are in the correct position, secure the feet to the underside of the TV set using 4 screws provided.

## 2 Connecting your set



- 1 Connect the TV to your power socket.
- 2 If you wish to use the TV to receive Freeview/Saorview channels, connect the RF input from the TV to your outdoor Digital TV aerial. If you do not wish to receive Freeview/Saorview, skip this step.
- 3 Connect to the internet. Ethernet provides the most stable connection.

## 3 Powering On the TV



**TV Control Stick**

Switch on the television by pressing the TV control stick located on the TV set.

**Remote Control:  
Installing Batteries**

Insert the batteries supplied into the remote controls and press the standby button to power on the TV.

## Win a SHARP Soundbar

Register your manufacturers guarantee online within 14 days of purchase at [www.registertoday.co.uk/sharp](http://www.registertoday.co.uk/sharp) and enter into a prize draw to win a Sharp Soundbar

Terms and conditions apply. Online registration only.



## Wall Mounting the TV

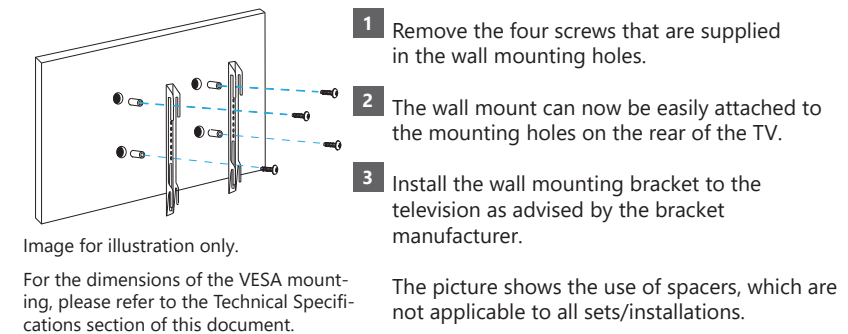


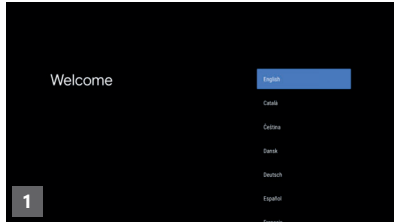
Image for illustration only.

For the dimensions of the VESA mounting, please refer to the Technical Specifications section of this document.

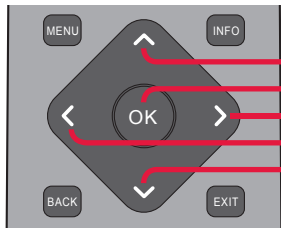
The picture shows the use of spacers, which are not applicable to all sets/installations.

## 4 First time installation

Basic installation steps are shown below. These may vary slightly depending on your model. Due to Android software updates, the look and feel of the TV start up procedure and subsequent menus can be subject to change.



When the set first turns on, it will ask you to select your preferred on-screen display language. This will change the language in which the menus and associated information is displayed in.



- Press to navigate up
- Press to confirm a selection
- Press to navigate right
- Press to navigate left
- Press to navigate down

### Android Phone users

During the set-up process, you will be prompted to sign-in to your Google account using your pre-installed "Google" app. This set up process will depend upon which model TV you are setting up. Please ensure you have your account details to hand.

## 5 Pairing the remote

If during the first time installation process the remote was not paired or skipped, then follow the process below to pair your remote with the television.

- 1 Turn the set on.
- 2 Press the button on the remote control.
- 3 The pairing screen will appear on the TV.
- 4 Now press and hold the "Left" and "Home" buttons on the remote simultaneously (highlighted).



- 5 The LED indicator on the remote control will start to flash.
- 6 Select the detected remote control shown on the screen and press OK.
- 7 Once paired the pairing screen will disappear.

This process will only need to be carried out if the remote is not paired. Once paired, when the button is pressed it will open the Google Assistant screen on the set and activate voice functionality.

## 6 The Google Assistant



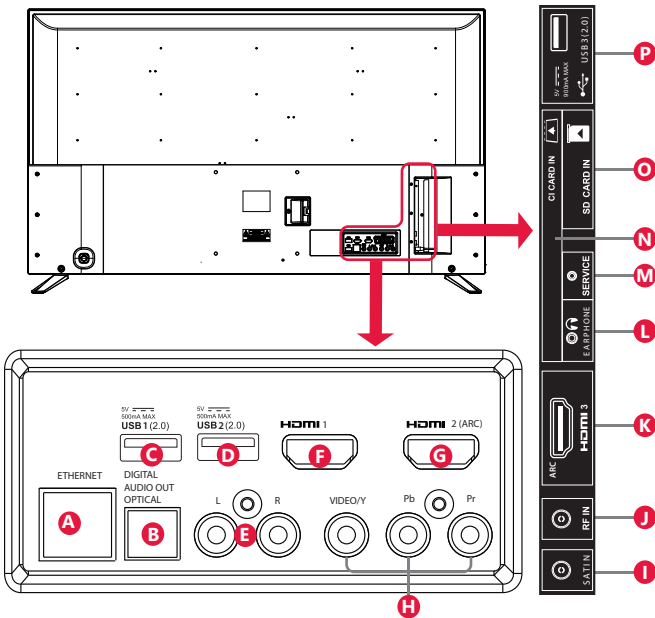
**Using the Google Assistant with your voice**

Remote controls with the Google Assistant have a Google Assistant dedicated button and a built-in microphone. To use this feature with the Google Assistant remote control, follow the instructions as below.

- 1 Before using the Google Assistant, you will need to pair the remote. Please follow step 5 of this guide to pair your remote to enable the Google Assistant.
- 2 Press the button. The LED indicator on the remote control will illuminate.
- 3 Wait for the on-screen message from the Google Assistant, then speak into the microphone. A good rule of thumb is to have the microphone positioned about 15-30 centimetres away from your mouth.

By speaking into the microphone, you can search for various content or control your connected smart home devices. Speech examples may be displayed on the television screen depending on your model.

## Connectivity



<b>A</b>	Ethernet/LAN	Network connection	<b>I</b>	SAT IN	Satellite Input
<b>B</b>	Digital Audio	Digital Optical Audio Output	<b>J</b>	RF in	RF / TV aerial input
<b>C</b>	USB 1	USB port 2.0	<b>K</b>	HDMI 3	HDMI input (ARC)
<b>D</b>	USB 2	USB port 2.0	<b>L</b>	Earphones	Earphone input
<b>E</b>	L/R	Audio shared for Video/Composite and component/ YPbPr	<b>M</b>	Service Input	Input is used only by service center
<b>F</b>	HDMI 1	HDMI input	<b>N</b>	CI card in	Common interface module
<b>G</b>	HDMI 2	HDMI input	<b>O</b>	SD	SD card input
<b>H</b>	Video/YPbPr	Video Input (green) and HD input (Ypbpr)	<b>P</b>	USB 3	USB port 2.0